

HISWG Caseloads Maps

Health Information System Working Group

Mapping 2014 Eastern Burma Caseloads of Border Based Health Services Providers

These maps and charts depict the number of cases treated for each main disease per target population in each township. This data highlights the extent of service provision in each area relative to the size of the population. The “official” population figures are from the Myanmar Ministry of Health 2014. HISWG does not provide an opinion on the accuracy of these total population figures but has included them in the absence of more current information. Most of the target populations are in relatively stable rural areas of Eastern Burma.

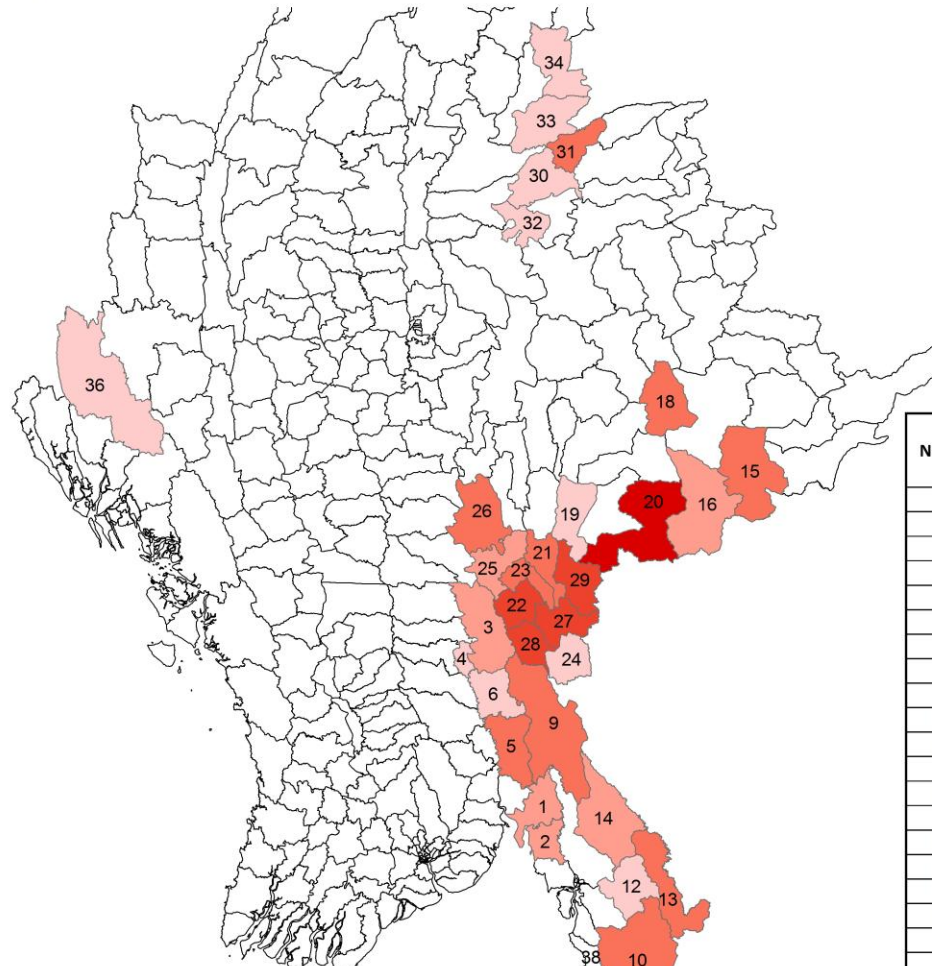
These graphs do not depict disease prevalence or incidence rates, nor do they represent the general morbidity conditions among the entire population of the region. Such indicators cannot be calculated with the data included as the caseloads do not include cases that did not see a health worker for treatment and because the data is not population based. (Because a person can have diarrhea or malaria more than one time in a year)

When interpreting these figures, it is important to note that the caseload treated per population depends on the underlying morbidity rate; certain diseases, such as malaria, are less prevalent in certain regions, and thus, the caseload per target population will be lower. Thus, a low caseload per target population could either be because service coverage was low or because the prevalence of the disease was low. Similarly, a high caseload per population does not necessarily indicate comprehensive service coverage; if the disease is very prevalent, it is possible that not all cases were treated.

Footnote: Data on the official township population is based on MIMU statistics. If township population data is not available from MIMU it is not reported in these maps.



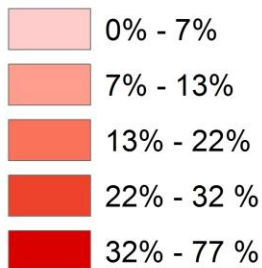
Eastern Burma ARI Caseloads per Target Population 2014 By Border Based Health Service Providers



January to December 2014

No	Township	ARI	Tartet Population	Official Township Population *
1	Bilin	3723	29351	180232
2	Thaton	300	3967	237741
3	Thandaunggyi	1331	13183	96064
4	Htantabin	62	1580	117662
5	Shwegyin	1257	7462	107251
6	Kyaukgyi	894	16236	113311
7	Tanintharyi	1126	13011	106884
8	Dawei	822	16496	146271
9	Hpapun	11680	72964	35019
10	Kyain Seikgyi	8232	43450	254397
11	Ye	5461	18927	263260
12	Kawkareik	2595	88427	219692
13	Myawaddy	12120	58890	210695
14	Hlaingbwe	3593	31720	265622
15	Mong Sart	668	3002	104529
16	Mong Ton	44	442	70100
17	Mine Kie (shan)	183	9542	
18	Khuhing	330	2174	53478
19	Mawkmai	209	6180	33840
20	Mong Pan	2189	2909	25845
21	Loikaw	2089	9724	128837
22	Hpruso	5556	21407	29315
23	Demoso	3390	18869	78990
24	Mese	148	2496	6313
25	Pekon	573	5481	103665
26	Pinlaung	114	766	192277
27	Bawlakhe	486	1524	11074
28	Hpasawng	4850	14731	25472
29	Shadaw	901	3638	6737
30	Manton	359	9029	38643
31	Namkhan	591	3740	107009
32	Namhsan	187	3679	71984
33	Mansi	567	10743	52946
34	Momaik	278	6814	62920
35	Nanyun	111	3317	51906
36	Peletwa	301	4432	96899
37	Yebyu	2034	2630	122106
Total		79354	562933	3828986

ARI / Total Population

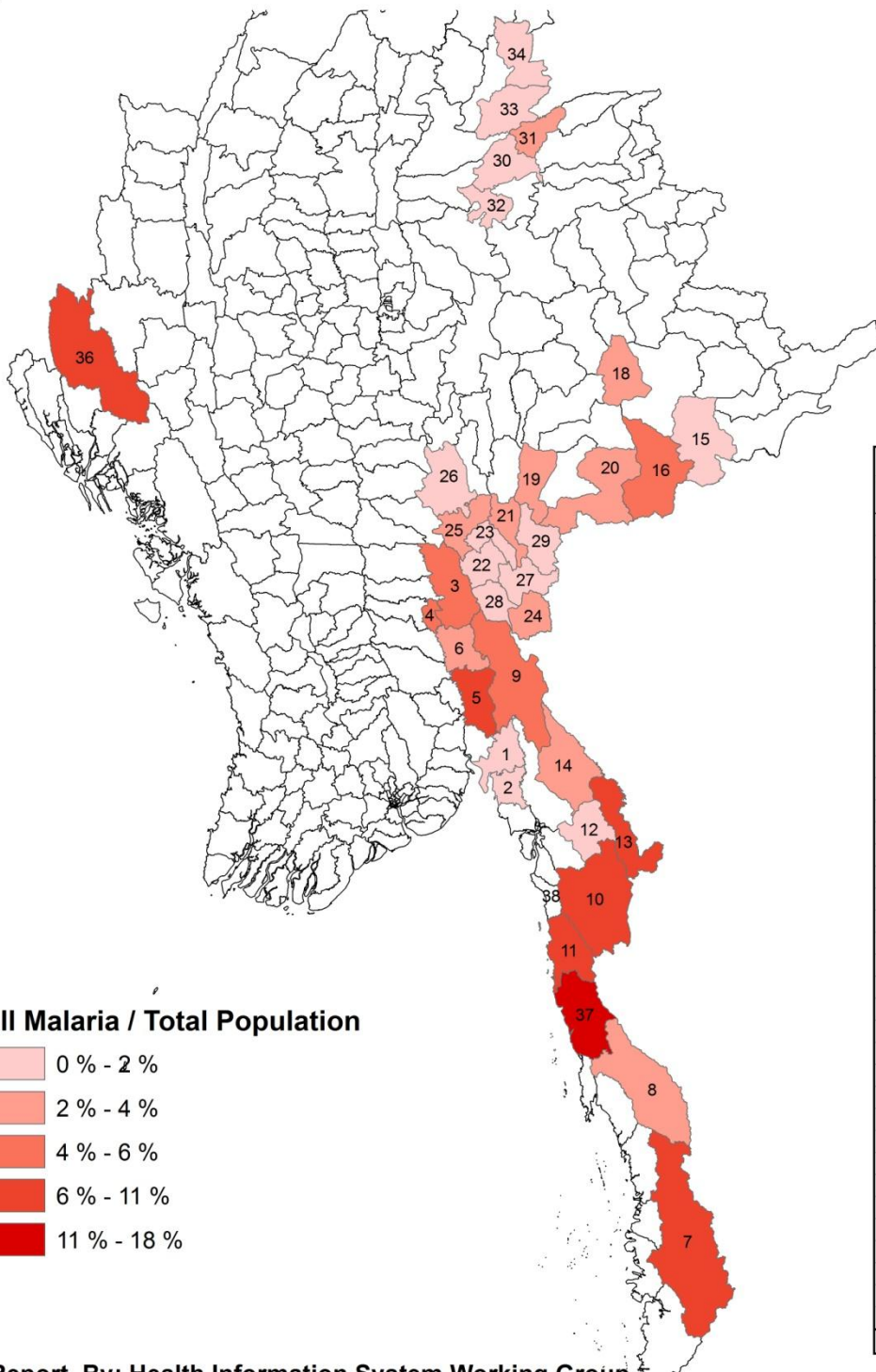


* Myanmar MoH 2014

Report By: Health Information System Working Group



Eastern Burma Malaria Caseloads per Target Population 2014 By Border Based Health Service Providers



January to December 2014

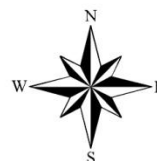
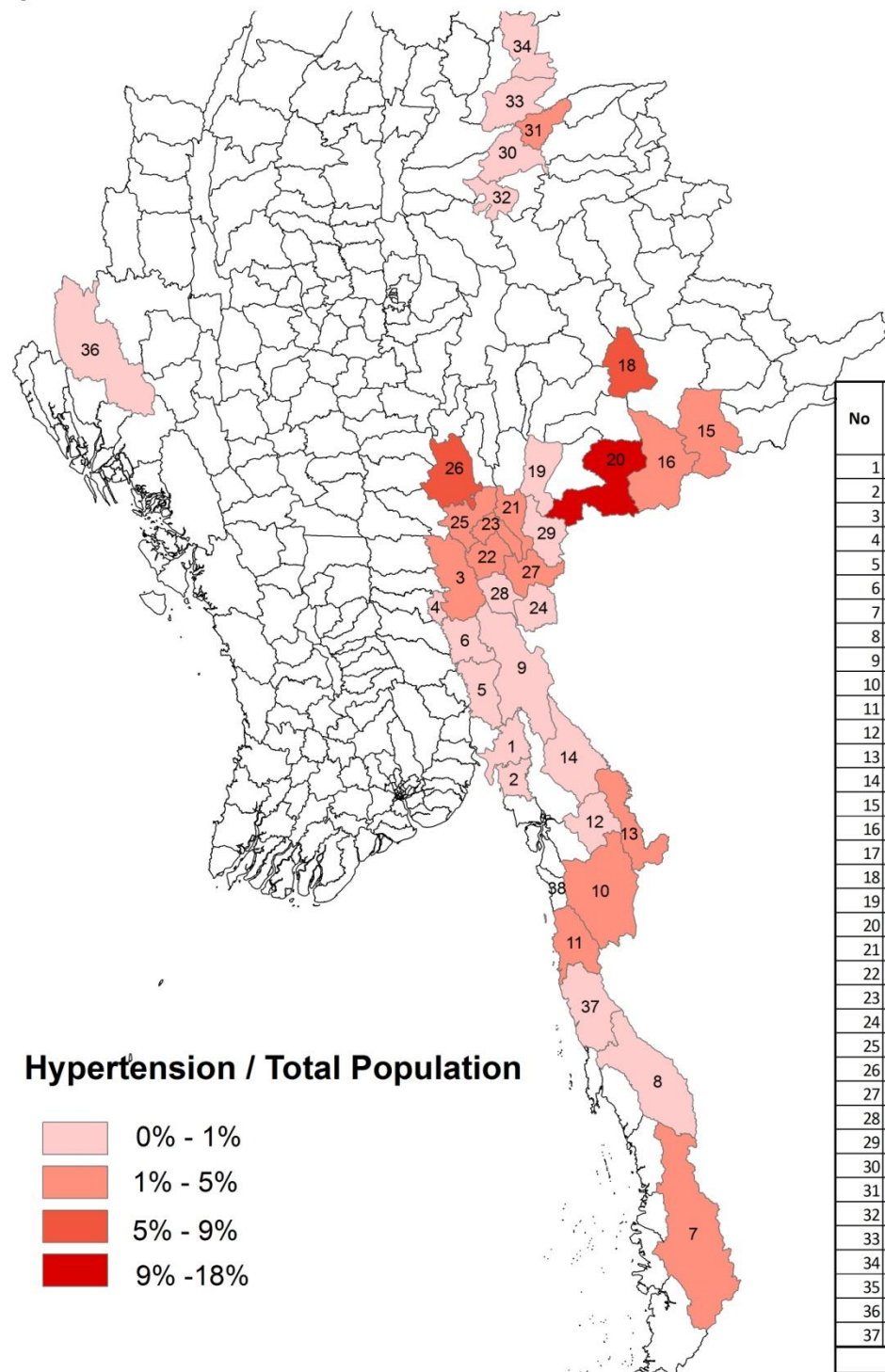
No	Township	Malaria	Tartet Population	Official Township Population *
1	Bilin	184	29351	180232
2	Thaton	12	3967	237741
3	Thandaunggyi	361	13183	96064
4	Htantabin	51	1580	117662
5	Shwegyin	404	7462	107251
6	Kyaukgyi	295	16236	113311
7	Tanintharyi	827	13011	106884
8	Dawei	213	16496	146271
9	Hpapun	2565	72964	35019
10	Kyain Seikgyi	2554	43450	254397
11	Ye	1459	18927	263260
12	Kawkareik	445	88427	219692
13	Myawaddy	3040	58890	210695
14	Hlaingbwe	293	31720	265622
15	Mong Sart	11	3002	104529
16	Mong Ton	12	442	70100
17	Mine Kie (shan)	17	9542	
18	Khuhing	36	2174	53478
19	Mawkmai	61	6180	33840
20	Mong Pan	24	2909	25845
21	Loikaw	162	9724	128837
22	Hpruso	119	21407	29315
23	Demoso	43	18869	78990
24	Mese	35	2496	6313
25	Pekon	72	5481	103665
26	Pinlaung	0	766	192277
27	Bawlakhe	2	1524	11074
28	Hpasawng	52	14731	25472
29	Shadaw	10	3638	6737
30	Manton	26	9029	38643
31	Namkhan	30	3740	107009
32	Namhsan	26	3679	71984
33	Mansi	0	10743	52946
34	Momauk	0	6814	62920
35	Nanyun	39	3317	51906
36	Peletwa	361	4432	96899
37	Yebyu	474	2630	122106
Total		14315	562933	3828986

* Myanmar MoH 2014

Report By: Health Information System Working Group



Eastern Burma Hypertension Caseloads per Target Population 2014 By Border Based Health Service Providers



January to December 2014

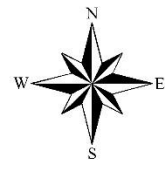
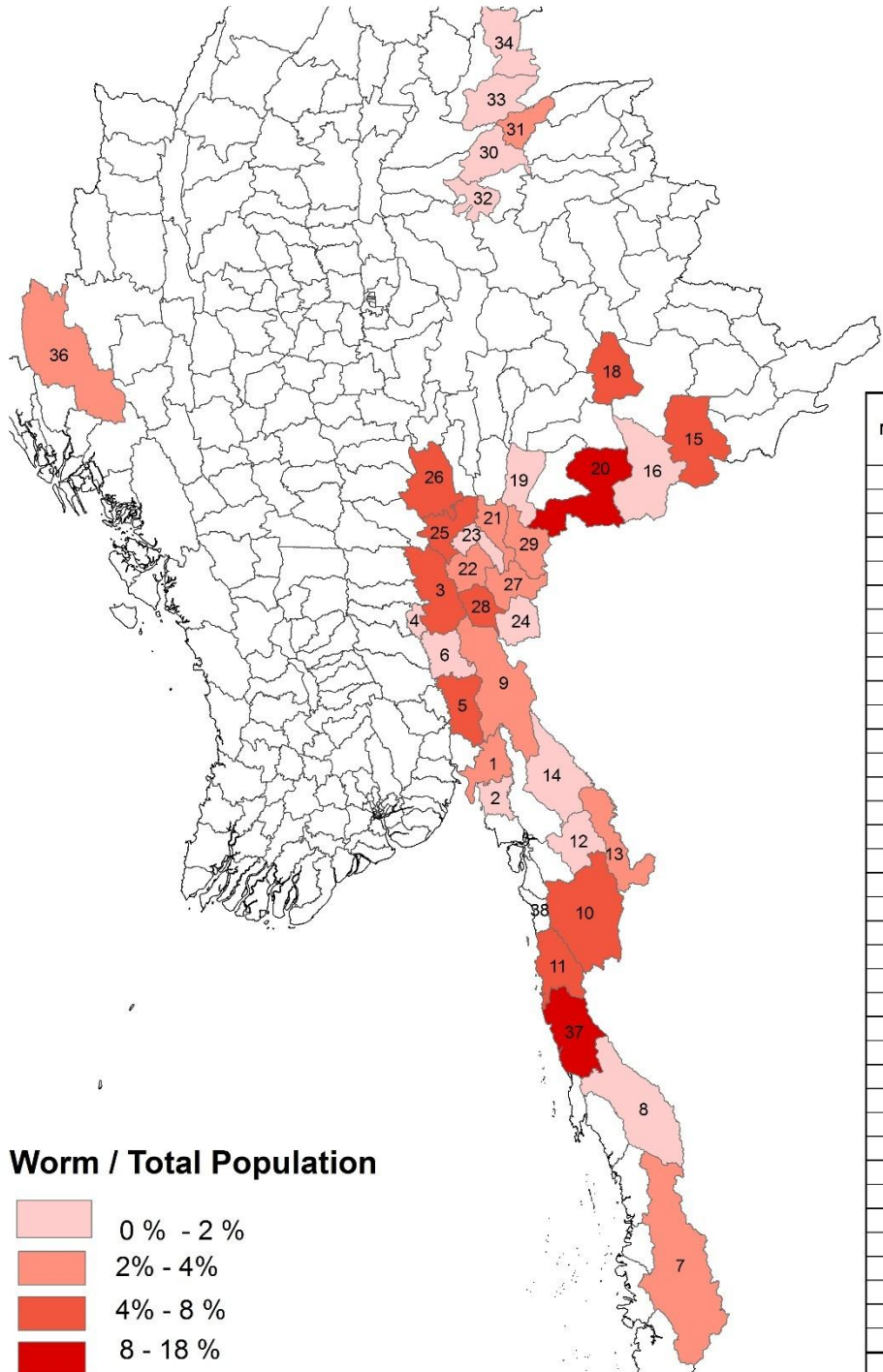
No	Township	Hypertension	Target Population	Official Township Population *
1	Bilin	217	29351	180232
2	Thaton	39	3967	237741
3	Thandaunggyi	301	13183	96064
4	Htantabin	8	1580	117662
5	Shwegyin	96	7462	107251
6	Kyaukgyi	52	16236	113311
7	Tanintharyi	229	13011	106884
8	Dawei	126	16496	146271
9	Hpapun	484	72964	35019
10	Kyain Seikgyi	830	43450	254397
11	Ye	523	18927	263260
12	Kawkareik	437	88427	219692
13	Myawaddy	1021	58890	210695
14	Hlaingbwe	147	31720	265622
15	Mong Sart	126	3002	104529
16	Mong Ton	11	442	70100
17	Mine Kie (shan)	110	9542	
18	Khuhing	201	2174	53478
19	Mawkmai	45	6180	33840
20	Mong Pan	536	2909	25845
21	Loikaw	180	9724	128837
22	Hpruso	503	21407	29315
23	Demoso	373	18869	78990
24	Mese	22	2496	6313
25	Pekon	185	5481	103665
26	Pinlaung	58	766	192277
27	Bawlakhe	72	1524	11074
28	Hpasawng	146	14731	25472
29	Shadaw	34	3638	6737
30	Manton	30	9029	38643
31	Namkhan	103	3740	107009
32	Namhsan	51	3679	71984
33	Mansi	86	10743	52946
34	Momauk	44	6814	62920
35	Nanyun	22	3317	51906
36	Peletwa	7	4432	96899
37	Yebyu	0	2630	122106
Total		7455	562933	3828986

* Myanmar MoH 2014

Report By: Health Information System Working Group



Eastern Burma Worm Caseloads per Target Population 2014 By Border Based Health Service Providers



January to December 2014

No	Township	Intestinal Worm	Tartet Population	Official Township Population *
1	Bilin	1015	29351	180232
2	Thaton	46	3967	237741
3	Thandaunggyi	629	13183	96064
4	Htantabin	19	1580	117662
5	Shwegyin	328	7462	107251
6	Kyaukgyi	75	16236	113311
7	Tanintharyi	405	13011	106884
8	Dawei	265	16496	146271
9	Hpapun	2102	72964	35019
10	Kyain Seikgyi	1885	43450	254397
11	Ye	1542	18927	263260
12	Kawkareik	431	88427	219692
13	Myawaddy	1901	58890	210695
14	Hlaingbwe	256	31720	265622
15	Mong Sart	166	3002	104529
16	Mong Ton	0	442	70100
17	Mine Kie (shan	72	9542	
18	Khuhing	103	2174	53478
19	Mawkmai	23	6180	33840
20	Mong Pan	533	2909	25845
21	Loikaw	226	9724	128837
22	Hpruso	662	21407	29315
23	Demoso	168	18869	78990
24	Mese	27	2496	6313
25	Pekon	398	5481	103665
26	Pinlaung	34	766	192277
27	Bawlakhe	50	1524	11074
28	Hpasawng	1028	14731	25472
29	Shadaw	106	3638	6737
30	Manton	41	9029	38643
31	Namkhan	69	3740	107009
32	Namhsan	33	3679	71984
33	Mansi	31	10743	52946
34	Momauk	18	6814	62920
35	Nanyun	41	3317	51906
36	Peletwa	93	4432	96899
37	Yebyu	421	2630	122106
Total		15242	562933	3828986

* Myanmar MoH 2014

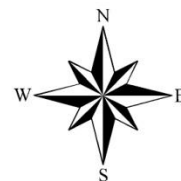
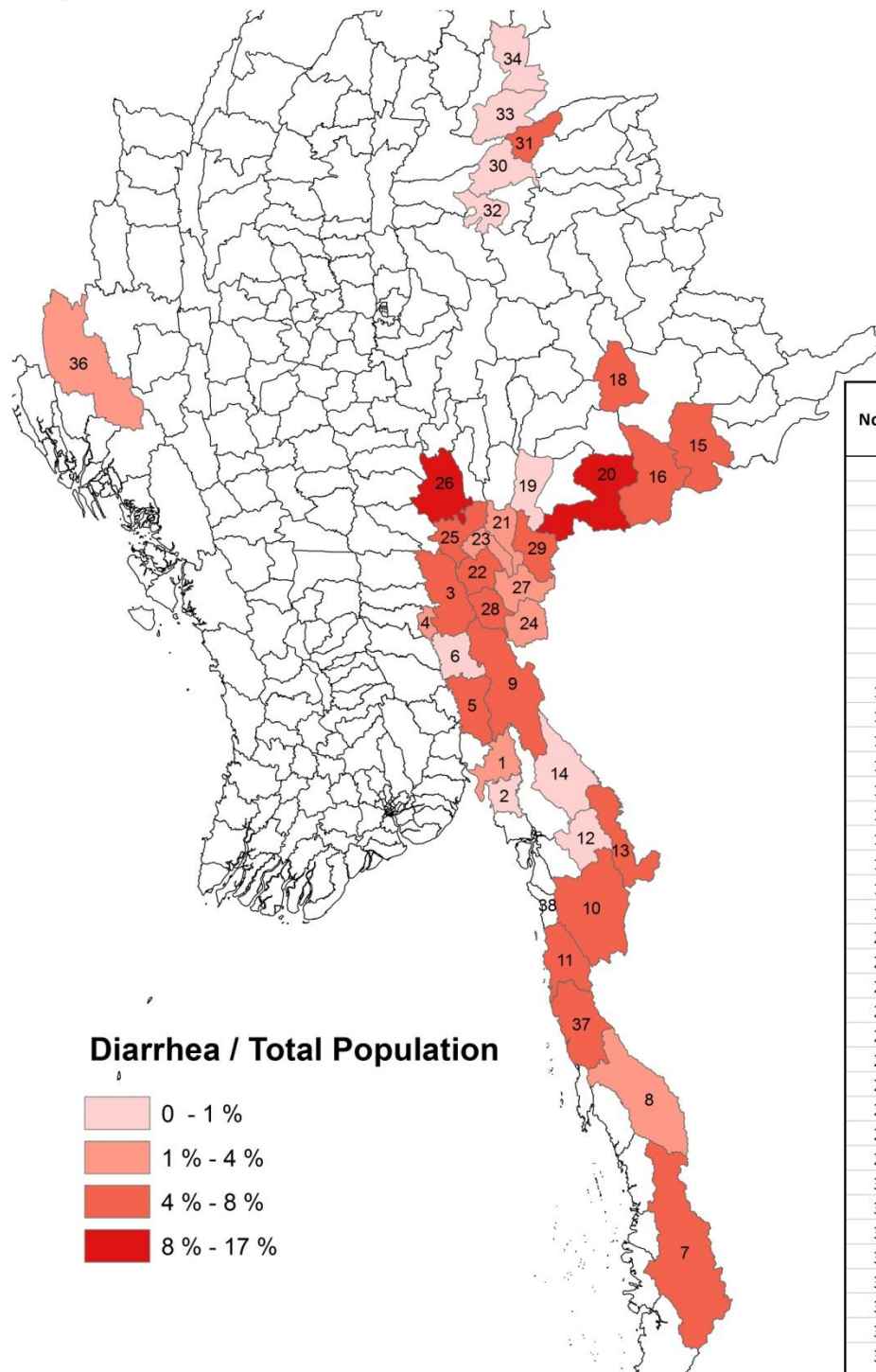
Worm / Total Population

- 0 % - 2 %
- 2% - 4%
- 4% - 8 %
- 8 - 18 %

Report By: Health Information System Working Group



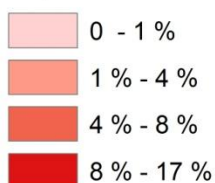
Eastern Burma Diarrhoea Caseloads per Target Population 2014 By Border Based Health Service Providers



January to December 2014

No	Township	Diarrhea	Tartet Population	Official Township Population *
1	Bilin	931	29351	180232
2	Thaton	67	3967	237741
3	Thandaunggyi	981	13183	96064
4	Htantabin	42	1580	117662
5	Shwegyin	574	7462	107251
6	Kyaukgyi	107	16236	113311
7	Tanintharyi	658	13011	106884
8	Dawei	421	16496	146271
9	Hpapun	4229	72964	35019
10	Kyain Seikgyi	2264	43450	254397
11	Ye	1344	18927	263260
12	Kawkareik	700	88427	219692
13	Myawaddy	2890	58890	210695
14	Hlaingbwe	616	31720	265622
15	Mong Sart	148	3002	104529
16	Mong Ton	20	442	70100
17	Mine Kie (shan)	70	9542	
18	Khuhing	144	2174	53478
19	Mawkmai	115	6180	33840
20	Mong Pan	479	2909	25845
21	Loikaw	363	9724	128837
22	Hpruso	1224	21407	29315
23	Demoso	546	18869	78990
24	Mese	58	2496	6313
25	Pekon	300	5481	103665
26	Pinlaung	82	766	192277
27	Bawlakhe	65	1524	11074
28	Hpasawng	793	14731	25472
29	Shadaw	166	3638	6737
30	Manton	29	9029	38643
31	Namkhan	197	3740	107009
32	Namhsan	49	3679	71984
33	Mansi	144	10743	52946
34	Momauk	54	6814	62920
35	Nanyun	76	3317	51906
36	Peletwa	163	4432	96899
37	Yebyu	210	2630	122106
	Total	21319	562933	3828986

Diarrhea / Total Population

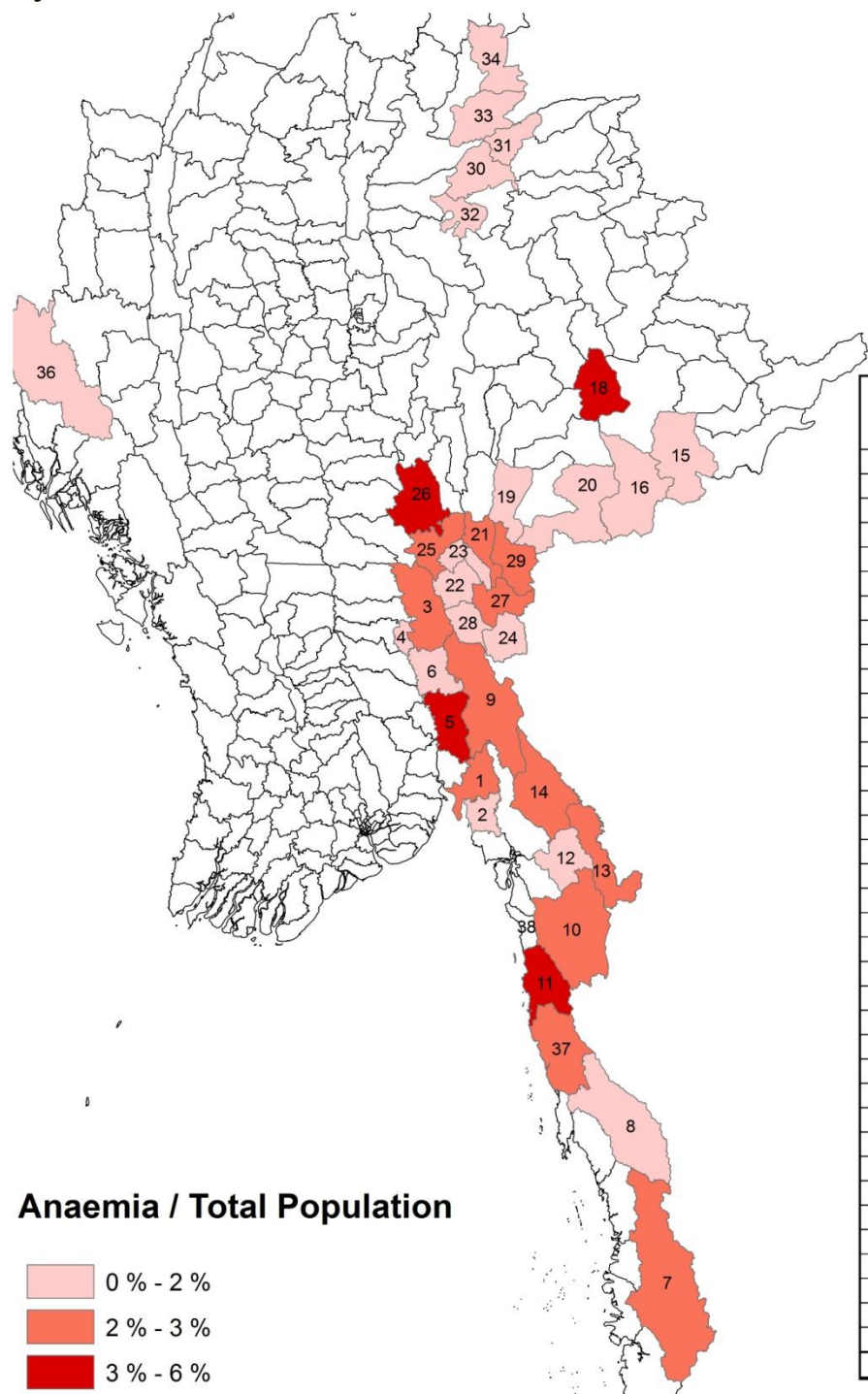


Report By: Health Information System Working Group

* Myanmar MoH 2014



Eastern Burma Anaemia Caseloads per Target Population 2014 By Border Based Health Service Providers



January to December 2014

No	Township	Anaemia	Tartet Population	Official Township Population *
1	Bilin	813	29351	180232
2	Thaton	40	3967	237741
3	Thandaunggyi	349	13183	96064
4	Htantabin	27	1580	117662
5	Shwegyin	453	7462	107251
6	Kyaukgyi	181	16236	113311
7	Tanintharyi	538	13011	106884
8	Dawei	228	16496	146271
9	Hpapun	2573	72964	35019
10	Kyain Seikgyi	1576	43450	254397
11	Ye	1140	18927	263260
12	Kawkareik	875	88427	219692
13	Myawaddy	1642	58890	210695
14	Hlaingbwe	742	31720	265622
15	Mong Sart	53	3002	104529
16	Mong Ton	0	442	70100
17	Mine Kie (shar	89	9542	
18	Khuhing	126	2174	53478
19	Mawkmai	75	6180	33840
20	Mong Pan	35	2909	25845
21	Loikaw	281	9724	128837
22	Hpruso	351	21407	29315
23	Demoso	81	18869	78990
24	Mese	38	2496	6313
25	Pekon	165	5481	103665
26	Pinlaung	42	766	192277
27	Bawlakhe	37	1524	11074
28	Hpasawng	170	14731	25472
29	Shadaw	150	3638	6737
30	Manton	36	9029	38643
31	Namkhan	67	3740	107009
32	Namhsan	13	3679	71984
33	Mansi	69	10743	52946
34	Momauk	42	6814	62920
35	Nanyun	2	3317	51906
36	Peletwa	52	4432	96899
37	Yebyu	75	2630	122106
Total		13226	562933	3828986

* Myanmar MoH 2014

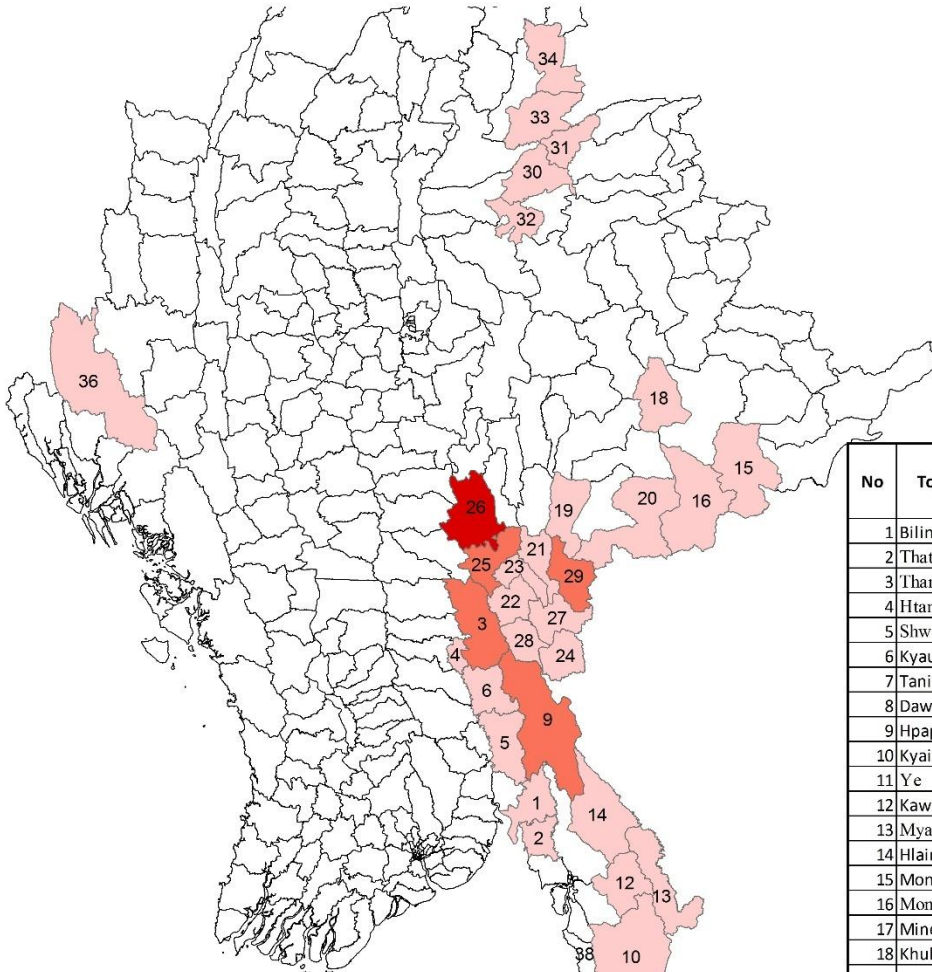
Anaemia / Total Population

- 0 % - 2 %
- 2 % - 3 %
- 3 % - 6 %

Report By: Health Information System Working Group



Eastern Burma TB Caseloads per Target Population 2014 By Border Based Health Service Providers



January to December 2014

No	Township	TB	Tartet Population	Official Township Population *
1	Bilin	67	29351	180232
2	Thaton	0	3967	237741
3	Thandaunggyi	99	13183	96064
4	Htantabin	0	1580	117662
5	Shwegyin	23	7462	107251
6	Kyaukgyi	0	16236	113311
7	Tanintharyi	56	13011	106884
8	Dawei	33	16496	146271
9	Hpapun	397	72964	35019
10	Kyain Seikgyi	57	43450	254397
11	Ye	56	18927	263260
12	Kawkareik	2	88427	219692
13	Myawaddy	139	58890	210695
14	Hlaingbwe	4	31720	265622
15	Mong Sart	0	3002	104529
16	Mong Ton	0	442	70100
17	Mine Kie (shan)	2	9542	
18	Khuhing	5	2174	53478
19	Mawkmai	0	6180	33840
20	Mong Pan	0	2909	25845
21	Loikaw	11	9724	128837
22	Hpruso	48	21407	29315
23	Demoso	7	18869	78990
24	Mese	2	2496	6313
25	Pekon	73	5481	103665
26	Pinlaung	29	766	192277
27	Bawlakhe	1	1524	11074
28	Hpasawng	59	14731	25472
29	Shadaw	43	3638	6737
30	Manton	0	9029	38643
31	Namkhan	2	3740	107009
32	Namhsan	1	3679	71984
33	Mansi	5	10743	52946
34	Momauk	0	6814	62920
35	Nanyun	25	3317	51906
36	Peletwa	3	4432	96899
37	Yebyu	0	2630	122106
Total			1249	562933

TB / Total Population

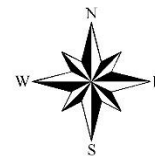
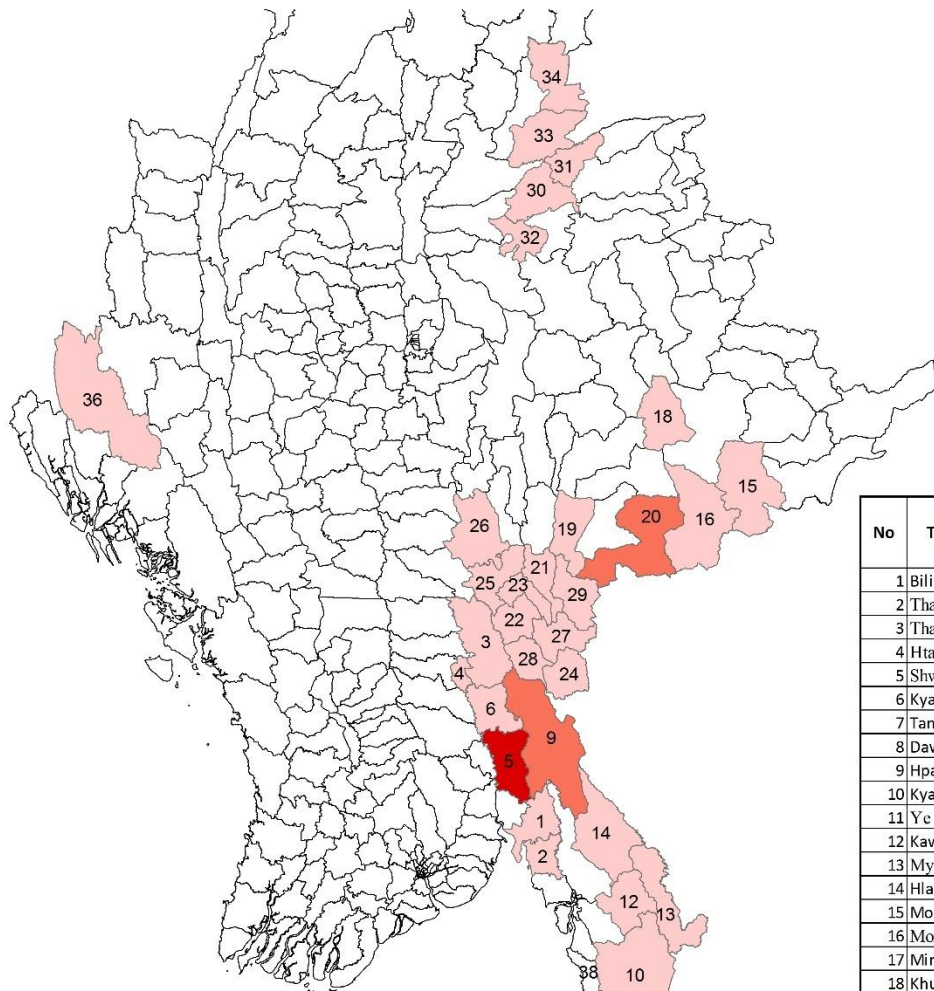
- 0% - 0.4%
- 0.4% - 0.1%
- 0.1% - 4%

Report By: Health Information System Working Group

* Myanmar MoH 2014



Eastern Burma War injury Caseloads per Target Population 2014 By Border Based Health Service Providers



January to December 2014

No	Township	War Injury	Tartet Population	Official Township Population *
1	Bilin	8	29351	180232
2	Thaton	0	3967	237741
3	Thandaunggyi	2	13183	96064
4	Htantabin	0	1580	117662
5	Shwegyin	71	7462	107251
6	Kyaukgyi	0	16236	113311
7	Tanintharyi	0	13011	106884
8	Dawei	4	16496	146271
9	Hpapun	245	72964	35019
10	Kyain Seikgyi	48	43450	254397
11	Ye	21	18927	263260
12	Kawkareik	0	88427	219692
13	Myawaddy	86	58890	210695
14	Hlaingbwe	3	31720	265622
15	Mong Sart	0	3002	104529
16	Mong Ton	0	442	70100
17	Mine Kie (shan)	0	9542	
18	Khuhing	0	2174	53478
19	Mawkmai	0	6180	33840
20	Mong Pan	13	2909	25845
21	Loikaw	0	9724	128837
22	Hpruso	0	21407	29315
23	Demoso	0	18869	78990
24	Mese	0	2496	6313
25	Pekon	1	5481	103665
26	Pinlaung	0	766	192277
27	Bawlakhe	0	1524	11074
28	Hpasawng	0	14731	25472
29	Shadaw	0	3638	6737
30	Manton	0	9029	38643
31	Namkhan	5	3740	107009
32	Namhsan	0	3679	71984
33	Mansi	0	10743	52946
34	Momauk	0	6814	62920
35	Nanyun	0	3317	51906
36	Peletwa	3	4432	96899
37	Yebyu	33	2630	122106
Total		543	562933	3828986

War Injury / Total Population



Report By: Health Information System Working Group

* Myanmar MoH 2014